

Technical Specifications



Safety Certifications

CE Mark of Declaration

Waterproof Certification

IP 54 (Splashproof)

Dimensions

• Height	27.5"
• Diameter	3.25"
• Base Dimensions	2.375" X 2.375", .25" flanged corners with 5mm mounting holes
• Beam	310°
• Net Weight	4 lbs

Material Specifications

• Metal	Anodized aluminum
• Gaskets	Neoprene polymer located at head, boot, and switch
• Lens	Tempered borosilicate glass

Electrical Specifications

• DC	24V
• Cycle	N/A
• Transformer	N/A
• Amperage	2.3
• Wattage	50
• Kelvin (color temperature)	4100
• On/off switch	Rocker, located at lower arm

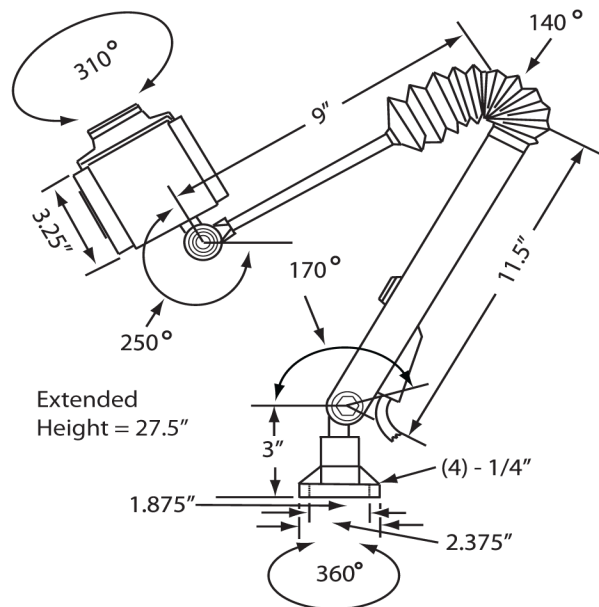
Cord Specifications

• Certification	SJT (oil resistant)
• Length	70.0"
• Plug	N/A, wires directly into power source of choice
• Composition	14 gauge 2-conductor copper wiring, SJT (oil resistant) certified neoprene jacket

Options

• Lens	Thick curved lens
• Mounting Brackets	HLP-22-2000 (see below) HLP-23 (see below) HLP-30 (see below)
• Bulbs	HLP-70-H3-24, HLP-75-BI-24, HLP-100-BI-24

Products specifications are subject to change.



HLP-22-2000



HLP-23



HLP-30

